



GAT MONTHLY MEMBERSHIP PROGRESS REPORT

Results as of: 4/30/2023

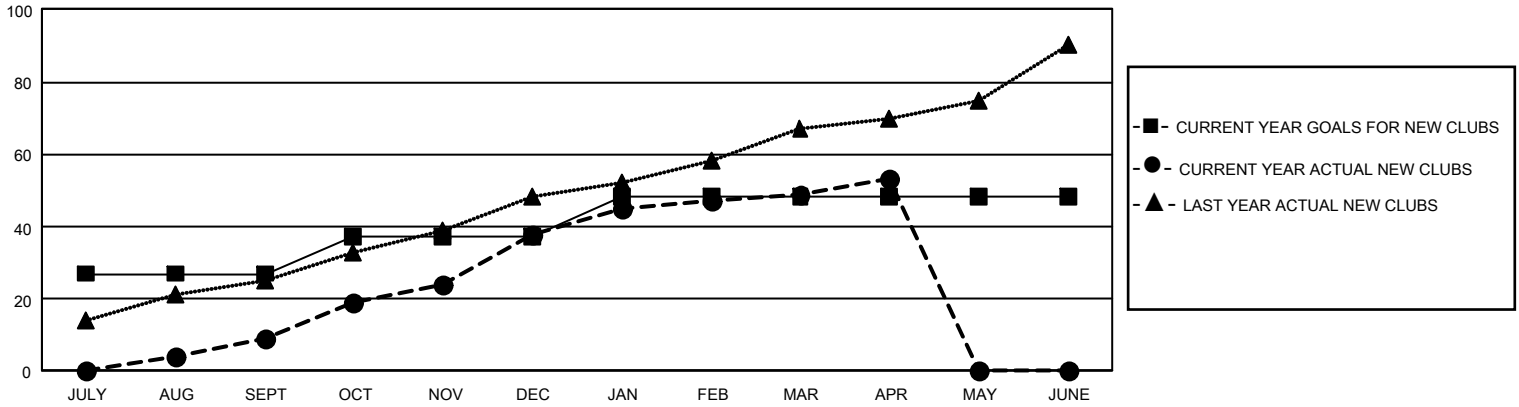
GMT Constitutional Area 6, Group B

REPORT DOES NOT INCLUDE CLUBS IN UNDISTRICTED AREAS.

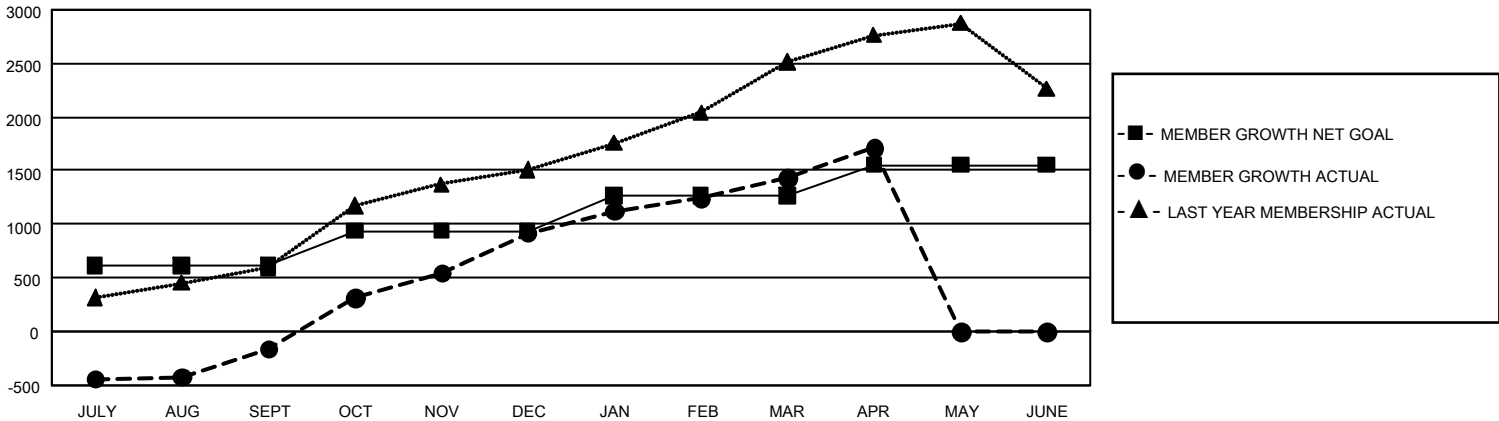
Clubs			
RESULTS FOR 2022-2023			
QUARTER	NEW CLUB GOAL	NEW CLUBS	DROPPED CLUBS
JULY/AUG/SEPT	81	9	28
OCT/NOV/DEC	30	29	3
JAN/FEB/MAR	33	11	0
APR/MAY/JUNE	0	4	0

Members			
RESULTS FOR 2022-2023			
QUARTER	MEMBER GROWTH NET GOAL	MEMBER GROWTH ACTUAL	DROPPED MEMBERS ACTUAL (including transfers)
JULY/AUG/SEPT	610	947	1,019
OCT/NOV/DEC	329	2,156	963
JAN/FEB/MAR	324	787	195
APR/MAY/JUNE	290	364	59

GOALS AND ACTUAL NEW CLUBS CUMULATIVE



GOALS AND ACTUAL MEMBERS CUMULATIVE



DROPPED CLUBS: 31	517 CLUBS OF 695 ADDED 1 OR MORE NEW MEMBERS	GENDER DISTRIBUTION	
		MALE 13,999 (73.98%) FEMALE 4,924 (26.02%) NON BINARY 0 (0.00%) PREFER NOT TO ANSWER 0 (0.00%)	
DROPPED MEMBERS		CLICK HERE FOR CUMULATIVE MEMBERSHIP DATA	TOTAL FAMILY UNIT MEMBERS 7,658
DECEASED 49 CLUB CANCELLED 462 OTHER 1,728 TOTAL 2,239			FAMILY MEMBERS PAYING HALF DUES 4,463